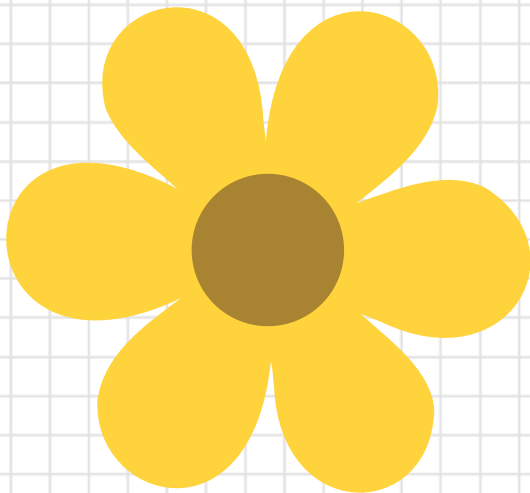




# THE SPEECH BUBBLE

The Speak, Learn and Grow Newsletter

**Spring is in the air**



**Welcome to Term 4!**

As we enter the final stretch of 2025, it's a great time to reflect on how much progress has been made this year. Our school holiday and school readiness parent training night was an exciting start - find out more about part 2 inside!

In this edition of The Speech Bubble, we are excited to share highlights from recent professional development opportunities, dive into how we teach social skills in a neuroaffirming way, and showcase some wonderful community events and practical tips for families.

Let's finish the year strong—continuing to build skills, confidence, and meaningful connections together!

## TERM 4 2025

|                  |      |
|------------------|------|
| Team members     | pg 2 |
| What we believe  | pg 3 |
| What's Happening | pg 4 |
| Community Info   | pg 5 |
| Parent Tips      | pg 6 |
| Fun for the kids | pg 7 |

# TEAM MEMBER TRAINING

As speech pathologists we are always eager to grow our skills and strengthen our knowledge in a range of areas. Recently Kerry has completed the Responsive Feeding House Model workshop, Julia and Elise have completed their Meaningful Speech AAC course and Julia completed the introduction to PROMPT technique workshop.

## Responsive Feeding



The Responsive Feeding House model workshop is a family centred approach to paediatric feeding assessment and therapy. Kerry had a great time participating in this workshop filled with case studies, videos, knowledge sharing and discussions to help build her knowledge and skills to support our clients with responsive feeding.



## Motor Speech Disorders

PROMPT therapy is a hands-on speech-language pathology technique that uses tactile (touch) and kinesthetic cues to help individuals with motor speech disorders. Julia said: "I really enjoyed the PROMPT course because the physical prompting aspect gave me hands-on techniques to support my kids with the motor movements for speech"



## Meaningful Speech AAC

AAC for Gestalt Language Processors- A Meaningful Speech Course dives into how to identify, evaluate and support GLPs who currently communicate using augmentative and alternative communication (AAC) or who you think may benefit from AAC.

Julia and Elise said: "The course taught them the importance of truly listening to each individual's communication style and how tailored AAC strategies can empower them to express themselves fully and meaningfully."



# NEUROAFFIRMING SOCIAL SKILLS

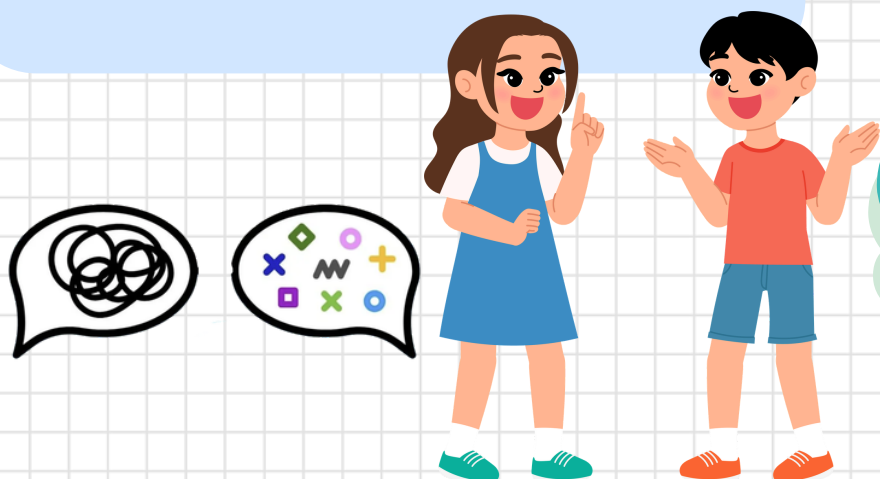
## How do we work on social skills using a neuroaffirming approach at Speak, Learn & Grow?

### Ways we support social skills:

- ✓ Include children in setting social skill goals
- ✓ Honour a child's stimming / sensory preferences
- ✓ Explore a child's interests as the basis for social connection
- ✓ Teach that all communication is valid & all play is ok - there is no 'right way' to play
- ✓ Educate & teach people around the child (e.g. other students, teachers, people in the community)
- ✓ Make changes to expectations & schedules where needed
- ✓ Build self-awareness of an individual's sensory differences, communication style & socialising preferences
- ✓ Build self-advocacy skills
- ✓ Build knowledge of different communication styles

### Things we don't do:

- ✗ Teach rigid 'conversation rules' or social rules'
- ✗ Only focus on changing the neurodivergent child
- ✗ Forcing or encouraging eye contact
- ✗ Teaching the child to 'sit still'
- ✗ Withholding preferred items or activities as rewards
- ✗ Value speech (spoken language as more desirable than other forms of communication
- ✗ Teach skills that lead to masking



"We do not want to be teaching neurodivergent kids that they should act 'more neurotypical' to be accepted and socially connected."  
Adina Levy

# PARENT TRAINING SESSIONS

Last month we ran an online **School Readiness Workshop** in collaboration with Jacky Peile, Occupational Therapist at Early Links. Together, we explored how speech, language, motor, and sensory skills play a part in helping children transition smoothly into school. We discussed:

- The power of parent knowledge for support beyond the therapy room or classroom
- The importance of families understanding the “why” behind strategies
- How confidence in supporting your child can make a lasting difference

A big thank you to Jacky for her partnership, and to all the parents who joined in and asked such thoughtful, practical questions.

## Looking Back



## What's Next?

The good news is that on **21 October**, our team will be back with Jacky for **Part 2 of our online School Readiness Training!** This session give practical strategies parents can use to support **emotional and academic readiness, and social skills**

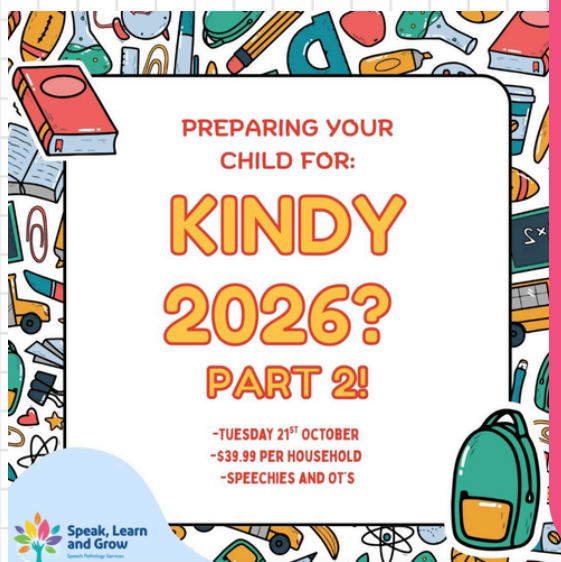
### Speech therapists will cover:

- Building phonological awareness
- Easily accessible resources to support early reading
- How to approach reading if your child has special needs

### Occupational therapists will cover:

- Creating daily routines before school starts
- Practising self-care and self-help skills
- Understanding after-school meltdowns
- Approaching the first day of school
- Collaborating with teachers
- Building friendships

The session will finish with a Q&A to answer your questions. Don't miss out on this valuable opportunity - **click here to register:** [Eventbrite](#)



# COMMUNITY SPOTLIGHT

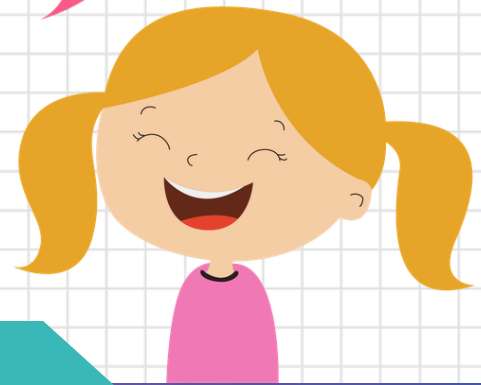
DLDandMe is a volunteer organization created to enhance understanding of developmental language disorder (DLD) and to offer support and resources for people impacted by DLD.

[www.dldandme.org/](http://www.dldandme.org/)

Learn about DLD from firsthand experiences in videos

Access helpful handouts, evidence summaries, and infographics

**DLD**  
**AND**  
**ME**



## Children's Week 2025

**"Children have the right to know their rights"**


**Celebrate Children's Week in the Shire!**

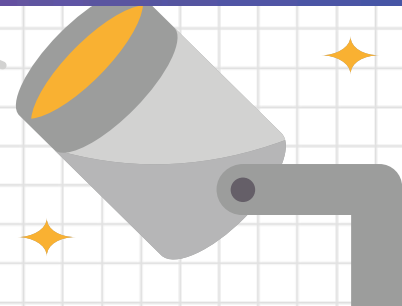
Bring the kids and join in for a FREE fun-filled event on Friday 24 October, 10am-12pm at Cronulla Central Hall (38-60 Croydon Street, Cronulla)

Enjoy:

- Free kids' activities
- Face painting
- Meet local family services
- A great morning out for the whole family!



DON'T FORGET TO CHECK OUT OUR WEBSITE TOO   
[speech-learning.com.au](http://speech-learning.com.au)



# PARENT TIPS

## Using **LEGO** for Language

### Practice social language

If siblings or friends join in, model sharing words: "Can I have a turn?", "Let's build together."

### Model prepositions

"Put the door on the house," "The man is under the bridge."

### Expand on their words

If your child says "car," you can say "Yes, a fast red car!"

### Work on sequencing

Build step-by-step and talk through it: "First we made the base, then the walls, and now the roof."

### Model, don't quiz

Use statements like "You're building a tall tower!" instead of "What are you building?"

### Celebrate communication, not perfection

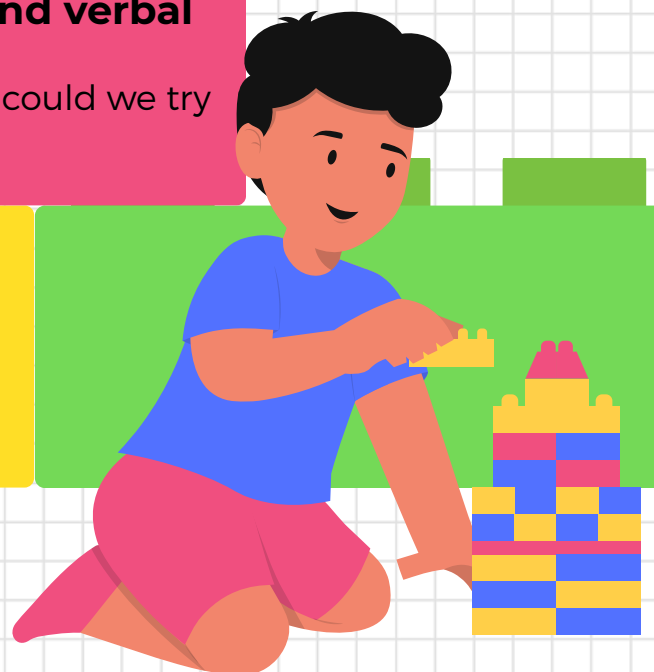
Focus on connection, creativity, and conversation. not neatness or completion.

### Use problem-solving talk and verbal reasoning

"Hmm, this piece doesn't fit. What could we try instead?"

### Follow your child's lead

Let them choose what to build. Comment on their ideas instead of directing the play.



# SPRING CRAFT CORNER: “BLOOMING FLOWER GARDEN”

## Materials:

- Coloured paper or cardstock
- Scissors
- Glue or tape
- Markers or crayons
- Popsicle sticks (optional)
- Small pots, cups, or recycled containers

## Instructions:

- Cut out flower shapes from coloured paper. Each flower can be simple (circle petals) or more detailed depending on your child’s age.
- Decorate the flowers using markers or crayons.
- Attach the flowers to popsicle sticks or paper stems.
- Place the flowers into small pots or cups to create a mini garden.



## Language Learning Tips:

- While making the craft, parents can encourage their child to:
  - **Name objects and colours:** “Can you choose a red flower? How many petals does it have?”
  - **Use action words:** “Fold the petals,” “Glue the stem,” “Decorate your flower.”
  - **Describe and compare:** “Which flower is taller? Which one is your favourite?”
  - **Practice prepositions:** “Put the flower in the pot,” “Place it next to the yellow flower.”
  - **Answer simple questions:** “What season is it when flowers bloom?”



# BLOGS

Have you seen our blogs for parents?

Read this blog by one of our incredible therapists, Anna, about turning daily activities into language opportunities. Children learn best through repetition, connection, and meaningful interactions. When language is woven into daily activities, it's more relevant – and easier to remember. .



[Click here to read this blog](#)

## CONNECT WITH US

The team at Speak, Learn and Grow want to stay connected with all members of the community.

Please follow us on our socials.

 [@speaklearngrow](#)

 [@speaklearngrow](#)

 [@slgcarinhbah](#)

 [Speak, Learn and Grow Speech Pathology Services](#)



### How to provide Feedback

Speak to your therapist directly

Approach our friendly reception staff

Fill in a Feedback form anonymously on our website:

[www.speech-learning.com.au](http://www.speech-learning.com.au)

Email us directly  
[info@speech-learning.com.au](mailto:info@speech-learning.com.au)